

Delta Secure 1000 High Speed Insulated Roller Shutter

Product Data Sheet

4 / 1

Description

Delta Secure 1000 High Speed Insulated Roller Shutters are designed and manufactured in Britain for industrial and commercial applications. With an opening speed of up to 650mm/sec this door is ideal where security, insulation and speed of opening are important criteria.

Electrically operated, the door can be supplied with a large range of finishes to suit aesthetics within new and existing buildings. The maximum size of door available is 7000mm clear open width x 6000mm clear open height i.e. 35 square metres.

Curtain

Manufactured from steel interlocked 77mm deep profiled 20mm thick sections for rigidity. Each panel is in-filled with CFC free high density polyurethane insulation.

The curtain when assembled is held in position with purposely designed injection moulded end fittings, manufactured from hard wearing nylon.

The bottom of the shutter is terminated with a purpose designed extrusion complete with interlocking rubber weather seal.

Insulation Value

The insulated lath provides a low global warming overall value of 1.37W/M²k)

Acoustic Value

Noise Insulation Value 18 D.B.A.

Barrel

Manufactured from seamless mild steel tube to BS4760 grade 50c. Gauge to suit door width and height. Maximum barrel deflection 1:400. Fitted with precision-machined bright drawn mild steel axles to BS970 EN33.

Vertical Side Guides.

Formed from pre-galvanised material having a minimum thickness of 2.5mm incorporating twin vertical brushes on both inner and outer faces of the guide. The brush carrier is constructed from PVC of medium impact strength, finished black and incorporating twin polypropylene weather strips, these run the full height of the door. The guide form is designed to allow reduced working faces and tapered inner faces to provide automatic interlocking / retaining feature for performance of retention under wind load. The guide is secured to the wall using 100 x 65 galvanised fixing angle.

Barrel Canopy (Optional Extra)

Manufactured from galvanised steel of suitable gauge to support weight of canopy over full width of doors. Plastisol finish also available.

Electric Operation

An electric safe drive motor complete with built on inverter and fail-safe gearbox, 415V/380V, 50 Hz, 3-phase earth and neutral is fitted. Each door is equipped with a fully automatic control panel to IP65 specifications, featuring a variable self closing delay facility and soft start motor control. An opto-electronic safety edge (soft/return to open) and infrared photocell unit are standard. Isolator required to be supplied with 415 volts, 50 Hz, 3 phases Earth and Neutral supply fused at 16 amps. Isolator to be positioned within 1 metre of the opening at the same height as the mounting height of the control panel. The motor and gearbox comply with all current European Safety Standards

Hand chain operation is supplied for manual operation in the event of power failure.

Operation Handing

Doors can be supplied with either left or right hand operation



Technical Information Certification

CE Mark

Type Of Approval

Mechanical Aspects

Side Guide Protection

Protection

Electrical Safety

Water Tightness EN12489:2000

Resistance to Wind Load EN12444:2001

Thermal Resistance

Air Permeability EN12427:2000

Opto Safety Edge Self Monitoring

Closing Forces

Anti Fall Back Device

Installation Instruction

Durability Of Mechanical Performance

Insulation Value

Acoustic Value

Door Weight For Loading Purposes

Declaration of conformity

Chiltern Dynamics – UKAS approved test laboratory

EN12604, Safety in use of power operated doors

EN12604: 2000 4.5.1 and EN12453: 2000 5.1.1.3

Against crushing, shearing or drawing in

Depending on the use

Class 1 (to BSEN12425:2000 15 minutes water spray at 55Pa)

Class 5 (to BSEN12424:2000 simulation of 1250Pa wind load on 7000mm span)

EN12428

Class 0 (to BSEN12426:2000 >24 m³/m²/hr)

EN12453 – 5.1.1.5

Auto Close Only EN12453 – 5.1.1.5

EN12453 – 5.1.1.5

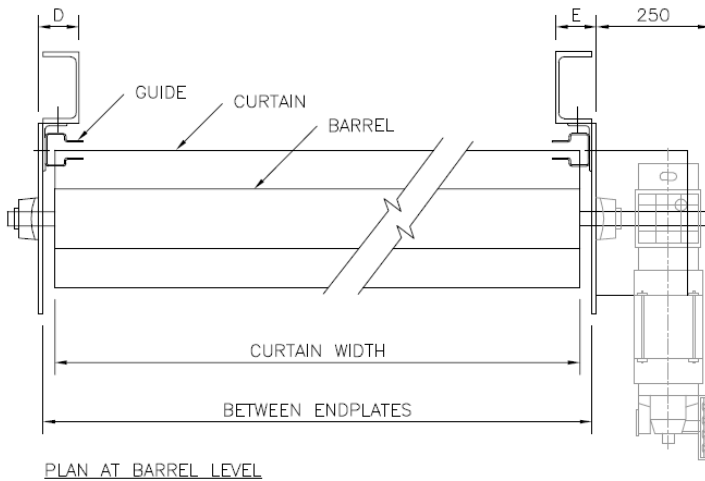
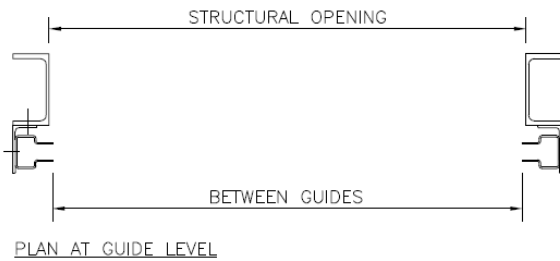
EN12635: 2002 4.1.1.1

EN12635: 2002 4.1.1.1

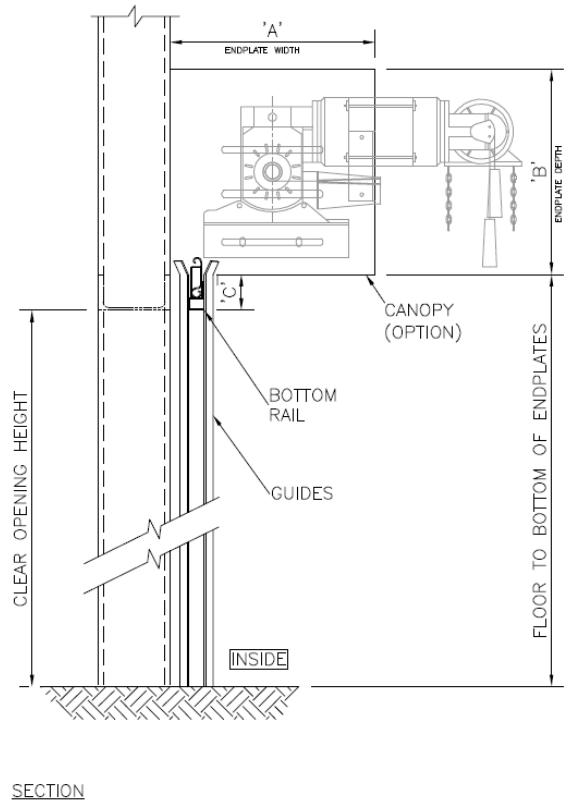
Insulation value 1.37W/ (M²k)

Noise insulation value 18 D.B.A.

36kgs per square metre



INSULATED SHUTTERS WITH ELECTRIC DIRECT DRIVE



Warranty

The Delta Secure 1000 doors are supplied with a 24 month parts and labour warranty as standard providing the equipment is maintained in accordance with the manufacturer's instruction and not modified in any way whatsoever. Full details of the servicing requirements are available.

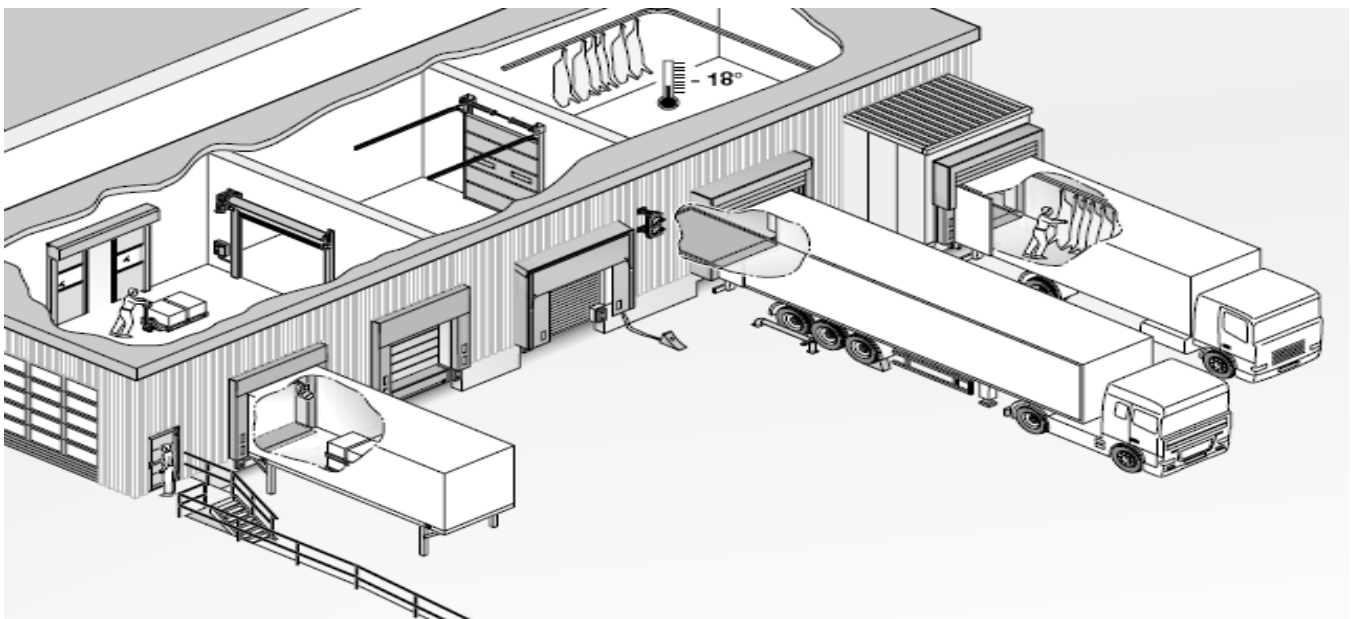
Servicing

To help protect your investment and extend the effective working life of the equipment, full maintenance packages are available and, in most cases, we can maintain all of your existing doors and loading bay equipment. The door must be serviced at least once per annum.

Full details of our preventative maintenance packages are available on request. Enerco recommend the first service is carried out 6 months after installation.



We have Worksafe Contractor, CHAS and Construction Line accreditation as well as being active members of the Doors and Hardware Federation (DHF) where we have their seal of approval for the service and maintenance of doors. We ensure that our staff are trained to the highest standard and all have an NVQ qualification in line with current industry guidelines This NVQ is in addition to the CSCS Health and Safety, First Aid, Asbestos Awareness and other training including product training applicable to our industry and is continually being updated.



Other products in the Delta range from Enerco include: -

- | | |
|---|--|
| Delta Guard – Commercial Shutters | Delta Roll – Steel Roller Shutter Doors |
| Delta Check – Fire Roller Shutter | Delta Level – Dock Levellers |
| Delta Slide – Insulated Overhead Doors | Delta Insudoor – Insulated Roller Shutters |
| Delta Part – Bi – Parting & Sliding Doors | Delta Strip – Strip Curtains |
| Delta Steel – Steel Security Door Sets | Delta Fold – Steel Sliding Folding Shutters |
| Delta Bar – Fixed & Removable Window Bars | Delta Lift – Scissor Lifts |
| Delta Seal – Dock Sealing Systems | Delta Shield – Perimeter Security |
| Delta Speed – High Speed Doors | Delta Grille – Retractable Window Grilles |
| Delta Service – Service and Repairs | Delta Load – Loading Bay Accessories |
| Delta Glide – Garage Doors | Delta Crash – Rubber, Polyurethane & PVC Swing Doors |
| Delta Glaze – Aluminium Glazed Door Systems | |

Please contact our sales team for more information on 01525 289322 or a brochure. Alternatively visit our web site www.enerco.co.uk or www.enercohighspeeddoors.co.uk

We reserve the right to change the specification or alter the product data sheet without prior notification.